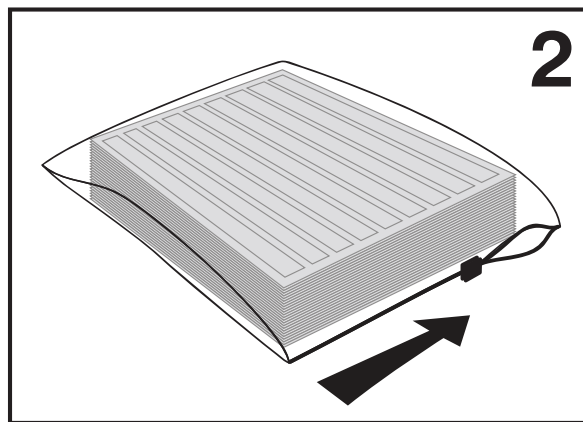
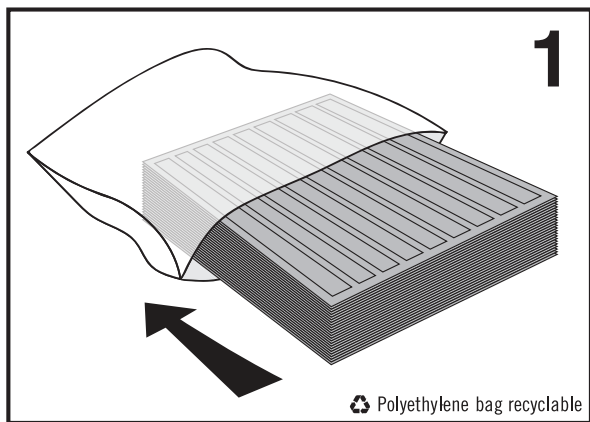
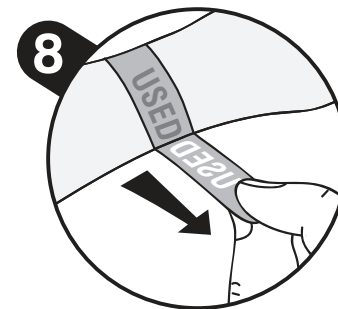
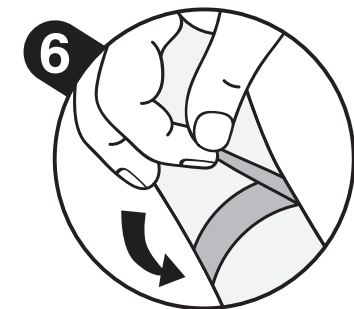
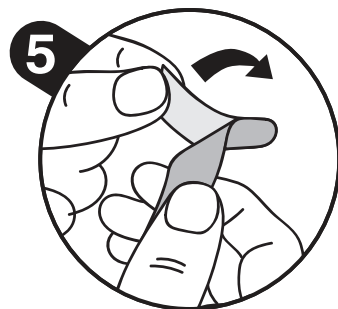
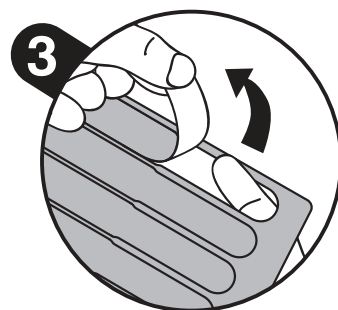
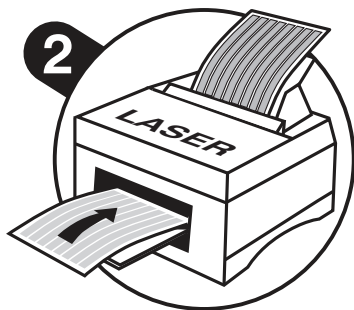
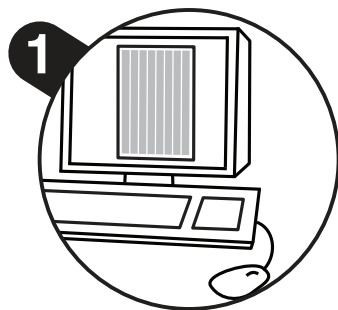


Storage Instructions



We have enclosed a plastic bag for your convenience to store your wristbands in. This is to keep them in the best condition for laser printing.

Usage Instructions



Voiding Wristbands - Laser Print Template



RECOMMENDED PRINT AREA

16mm

265mm

18mm

2mm

Sheet size: A4 (21mm x 297mm)

Wristbands per sheet: 10

Wristband size: 265mm x 18mm

Gap between wristbands: 2mm

Long edge print margin: 5mm

Short edge print margin: 16mm

For optimum print please feed into the Printer in direction of arrows.
Use bypass or manual feed tray where possible.

